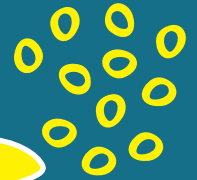
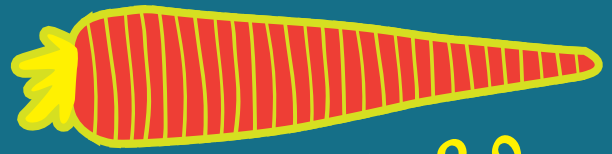


# April

2018



please drink responsibly

## New Beers

Epic Utah Sage Saison  
6 pack, \$7.69

Bristol Cherry Sour  
22 oz, \$6.99



Ale Smith Speedway Stout  
16 oz, \$7.99

Abita Purple Haze  
6 pack, \$8.79

Bonfire WTFO  
6 pack, 16 oz can, \$11.49

Destil Sour Apricot  
4 pack, \$10.59

Furstenberg  
Black Forest Pils  
6 pack, \$9.79



## Liquors

Bacardi Gold, Silver & Black Rum  
1.75L, Reg \$23.79, Now \$22.79

Cazadores Blanc & Reposado Tequila  
1.75L, Reg \$39.99, Now \$32.99

Carolans Irish Cream  
1.75L, Reg \$22.99, Now \$19.99

New Amsterdam Gin & Vodka  
1.75L, Reg \$22.99, Now \$20.99

## Wine Specials

14 Hands Hot to Trot Red & Pinot Grigio  
750ml, Reg \$8.99 Now \$7.99

Red Diamond Cabernet Sauvignon & Pinot Noir  
750ml, Reg. 8.99 Now \$7.99

Red Diamond Chardonnay & Mysterious Red Blend  
750ml, Reg. \$7.99 Now \$6.99

## Wines

### Easter ~ Spring Dinner

Chateau St Michelle  
Harvest Select Riesling,  
Gewurztraminer,  
and Riesling  
750ml, \$9.99



Pine Ridge  
Chenin Blanc  
Viognier  
750ml, \$11.99

Cline Viognier  
750ml, \$10.59

Coteaux Bourguignon  
Cuvee Gamay,  
Pinot Noir  
750 ml, \$15.49

Cline Pinot Noir  
750ml, \$14.89

Prices Good Until End of April 2018

## Banana Belt Liquors

300 US - 24, Woodland Park, CO. 80863 719.352.6978  
info@bananabeltliquors.com

HOURS: 8 a.m. - 9 p.m. MON - THURSDAY ~ 8 a.m. - 10 p.m.  
Friday - Saturday ~ 10 a.m. - 5 p.m. Sunday

